



GPS MicroTRACKER OVERVIEW

CP-100T

The CP-100T is a micro GSM-based, GPS tracking device designed for overt or covert tracking applications. Applications include:

- Asset Tracking (Auto, Motorcycle, Packages, etc.)
- Child Safety, Elderly Personnel Location Awareness
- Executive Protection and VIP Travel
- Teenager/Employee Driving Patterns

With this high performance unit you can track children, pets, vehicles and other high value assets by cellular Short Message Service (SMS) using pre-assigned simple command entered into most mobile phones or Smartphone. The response message provides a Google Maps link so user's can immediately see where the device is located. It features an Atheros AR1511 Chip Set with SIM-card bay and a lithium rechargeable battery. The unit is ideally suited for real-time, on demand tracking.

SIM Card sold Separately.

This feature-rich device is ultra small and water resistant. It incorporates a low power designed circuit and License-free software to operate on your own WM6 mobile phone. A duress/SOS message can be sent when the panic button is held for 3 seconds. The unit can automatically report when the GPS tracker enters or departs a pre-established safety zone (Geo Fence) and can also be set up to report its current location periodically or on-demand.

The CP-100T requires no service fees or contracts. Simply supply your own SIM card from T-Mobile or other GSM cellular carrier and you are ready to begin tracking! Call us today for complete details or if you have any questions.



Simple text commands are used to query the CP-100T



"The smallest, on-demand GPS tracking device available."

Features

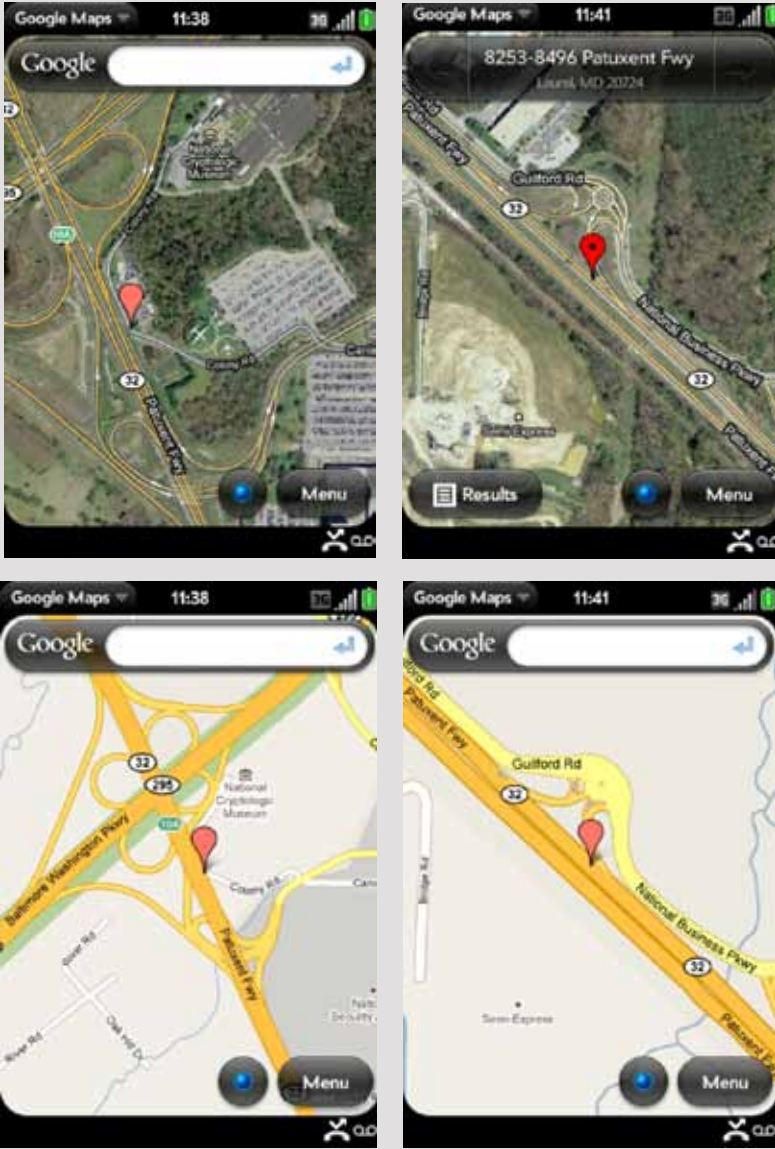
- Easiest, Smallest to Use GPS Tracker on the Market
- Track Children, Vehicles, Pets, Packages, etc.
- Track the Whereabouts of Your Teenager or Employees
- SOS Button Lets You Notify Others of a Duress Situation
- Ultra Small. Fits on a Key Ring
- Easy to use Text Commands
- Uses Commercially Available SIM Cards from T-Mobile
- GSM Quad Band (850, 900, 1800, 1900 MHz) Operation
- Low Power Consumption (>100 Hour) Fast Recharging
- Optional Vehicle Charger & Wall Outlet Charger
- Optional Water Resistant Plastic Case



The unique antenna design provides full omni-directional coverage.



GPS MicroTRACKER OVERVIEW



Specifications

Frequency	GPS: L1, 1575.42 MHz GSM/GPRS: Quad-band 850, 900, 1800, 1900 MHz
Transmission Output	GSM: 2W (33 dBm) DCS: 1W (30 dBm)
Dimensions	H: 1.77" (45 mm) L: 1.36" (34.5 mm) W: 0.82" (21 mm)
Weight	1 Oz (30 g)
Temperature	-4° F to +140° F (-20° C to +60° C)
Low Battery Indicator	Yes
Outlet	Computer 5 VDC (USB Port)
Battery	3.7 V Li-Polymer Battery (450 mAh) Stand-By Time: Max 115 hours Over 90 hours of use when unit is set to report every 2 hours
GPS	ATHEROS AR1511 Chipset



Optional: Car Charger, Wall Charger and Waterproof Case.

"Now I have a simple way to keep track of my daughter. I don't worry as much knowing I have a way to keep tabs on her."

Mrs. Forrest, Laurel, MD

Example Screen Shots Above. The CP-100T sends periodic or on-demand text messages to your mobile phone. The text messages contain a link to Google Maps which allows a data-enabled mobile phone to quickly view the location of the device.



© Copyright Transformational Security, LLC 2010 All rights reserved. Specifications subject to change.